



GIARDINI COSMOS

Giardini Cosmos

Un progetto ambizioso per un'area incontaminata di circa 15 ha, a poche centinaia di metri dal mare, che vedrà sorgere al suo interno poche ed esclusive ville ed un piccolo villaggio.

Formazioni granitiche imponenti si alternano a boschetti di ulivi e ginepri selvatici che fanno assaporare l'autentico profumo della Costa Smeralda.

Percorrendo i sentieri dei Giardini Cosmos si è sorpresi da spettacolari belvedere e scorci panoramici su tutte le insenature e le baie che si stendono attorno a Porto Cervo. La prima fase del progetto vede la realizzazione di tre ville:

- PHISIS la natura
- KALLOS la bellezza
- THEAMA la meraviglia

An ambitious project for an uncontaminated area of approximately 15 acres, a few hundred meters from the sea, that will rise in its interior few and selected villas and a little village. Magnificent rock formations alternate with forests of wild olive and juniper trees, that let you perceive the authentic/real scent of the Emerald Coast.

Along the tracks of the Giardini Cosmos, you are pleasantly surprised by the wonderful views and scenics of all the inlets and bays that spread over Porto Cervo.

The first stage of the project applies the realization of three villas:

- PHISIS the nature
- KALLOS the beauty
- THEAMA the wonder

A satellite map showing a coastal area with a large body of water at the top. A white rectangular box with a thin border is positioned in the upper left, containing the text 'Poltu Quatu'. Below this, a red circle highlights a specific area on the left side of the map, which contains a marina and some buildings. A black rectangular box with a thin border is centered within this red circle, containing the text 'Giardini Cosmos'. The map shows a mix of green vegetation, grey roads, and blue water.

Poltu Quatu

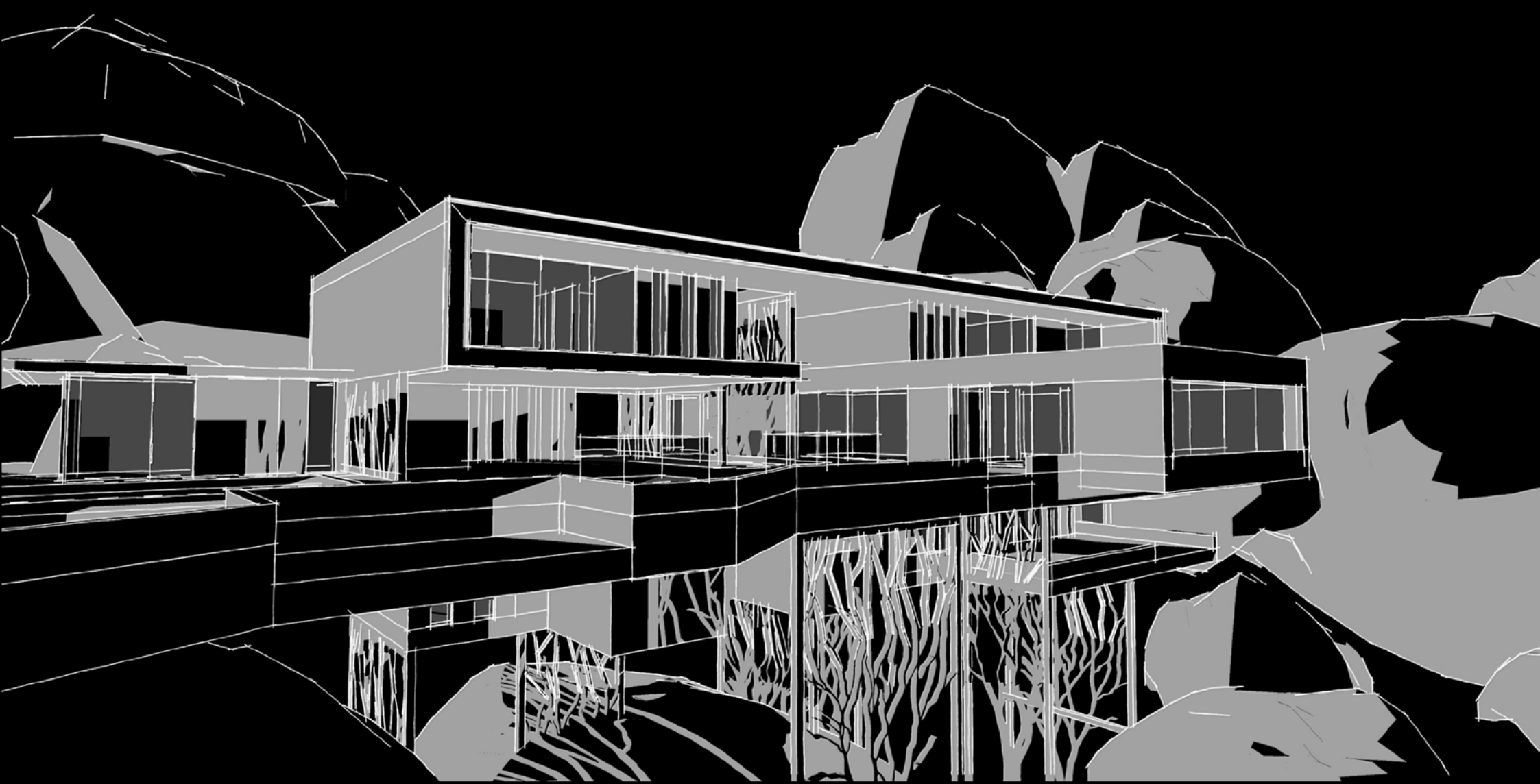
Giardini Cosmos

Villa Phisis



Villa Phisis



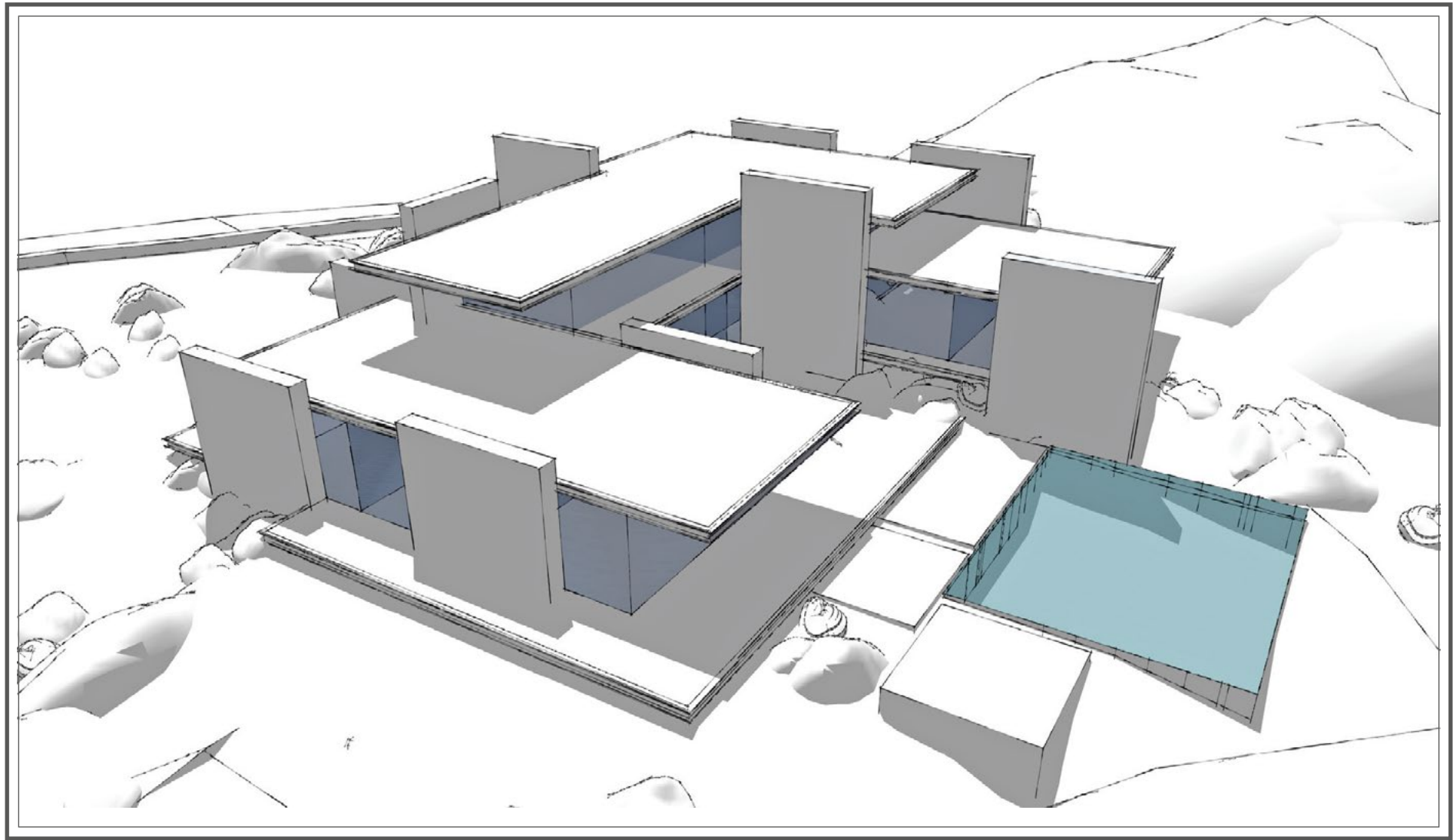


Theama

GIARDINI COSMOS



Concept Villa Kallos



Concept Villa Kallos



Concept Villa Kallos



Concept Villa Kallos



GIARDINI COSMOS